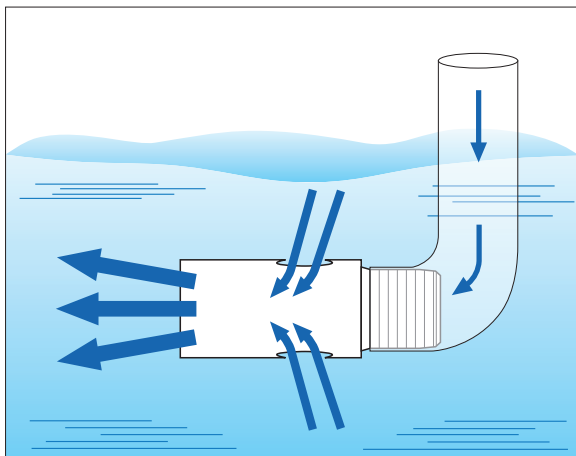


# Ejector Nozzle for Solution Agitation

EJX



- By additionally taking in surrounding liquid, the EJX series nozzle ejects 3–4 times more volume than the amount originally supplied.

- Simple structure and compact, lightweight design.

**[STANDARD PRESSURE]**

0.05 MPa

**[APPLICATIONS]**

- Solution agitation (even mixing, preventing deposition)
- Cleaning in liquids
- Submerged etching and plating

Structure	<ul style="list-style-type: none"> <li>• One-piece structure, made of metal or plastic.</li> </ul>
Material	<ul style="list-style-type: none"> <li>• S303 (S304 for sizes R1 and R1 1/2)</li> <li>• PP (PVC for sizes R1 and R1 1/2)</li> </ul>

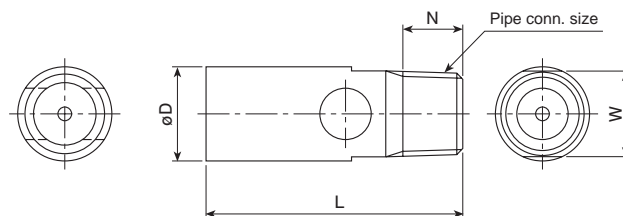
Pipe conn. size	Dimensions (mm)				Weight (g)	
	L	W	øD	N	S303 S304	PP PVC
R1/8	30	10 (11) <sup>2</sup>	11	7	11	1.3 <sup>1</sup>
R1/4	48	14 (16) <sup>2</sup>	16	10.5	26	3.2 <sup>1</sup>
R3/8	72	22	24	11	80	10
R1/2	93	27	31	14	170	20
R3/4	126	34	42	15	420	48
R1	172	60	76.3 (80) <sup>2</sup>	18	2,200	460
R1 1/2	212	80	89.1 (90) <sup>2</sup>	20	3,200	540

\*1) Sizes R1/8 and R1/4 are made of PP and are injection molded.

\*2) Dimensions in ( ) show those of plastic EJX series nozzles.

[Note] Appearance and dimensions may differ slightly depending on material and nozzle code.

**DRAWING**



Supplied volume code	Pipe conn. size	Supplied water volume (L/min)						Outlet water volume (L/min) [Reference only]						Free passage diameter (mm)
		0.03 MPa	0.05 MPa	0.1 MPa	0.15 MPa	0.2 MPa	0.3 MPa	0.03 MPa	0.05 MPa	0.1 MPa	0.15 MPa	0.2 MPa	0.3 MPa	
1	R1/8	0.85	1.10	1.56	1.91	2.20	2.69	2.2	3.1	5.0	6.6	9.2	10	1.5
4	R1/4	3.10	4.00	5.66	6.93	8.00	9.80	8.1	11	18	24	34	38	2.8
9	R3/8	6.97	9.00	12.7	15.6	18.0	22.0	18	26	41	54	75	85	4.2
16	R1/2	12.4	16.0	22.6	27.7	32.0	39.2	33	46	72	95	134	151	5.7
30	R3/4	23.2	30.0	42.4	52.0	60.0	73.5	61	86	140	180	250	280	7.7
90	R1	69.7	90.0	127	156	180	220	180	260	410	540	760	850	13.3
160	R1 1/2	124	160	226	277	320	392	330	460	720	950	1,340	1,510	17.5

**HOW TO ORDER**

To inquire about or order a specific nozzle please refer to this coding system.

Example: 3/8M EJX 1 - 9 PP

<b>3/8M</b>	<b>EJX 1 -</b>	<b>9</b>	<b>PP</b>
Pipe conn. size <sup>3</sup>		Supplied volume code	Material
<input type="checkbox"/> 1/8M <input type="checkbox"/> 1/4M <input checked="" type="checkbox"/> 1*1/2M		<input type="checkbox"/> 1 <input type="checkbox"/> 160	<input type="checkbox"/> S303 <input type="checkbox"/> S304 (for sizes 1M and 1*1/2M) <input checked="" type="checkbox"/> PP (PP-IN for sizes 1/8M and 1/4M) <input type="checkbox"/> PVC (for sizes 1M and 1*1/2M)

\*3) "M" indicates male thread ("R" of the ISO standard), e.g. 1\*1/2M = R 1 1/2.