

**Optimal Cleaning
with 3 Different
Types of Foam**

Cleaner-foam Spray Nozzle Unit AWACart

With Sprayer Gun

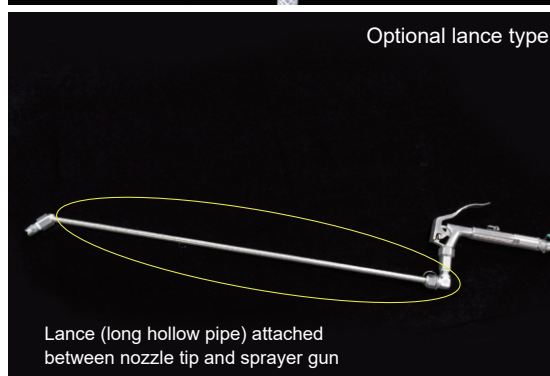
Lance type is optional and available for spraying in hard-to-reach areas such as high places.



Standard



Optional lance type



Lance (long hollow pipe) attached between nozzle tip and sprayer gun



Designed in a mobile cart format.



Compact design with low center of gravity provides high installation



Fluid level gauge visualizes residual liquid quantity.




Low-pressure foaming minimizes splattering.




Specialized foaming nozzle generates fine foams.

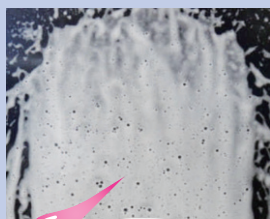


Change of nozzle tip alters a foam spray pattern.*¹

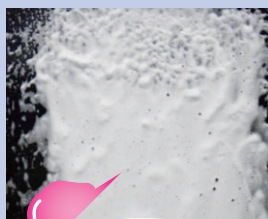
*¹ Standard  Flat spray nozzle VVP series

*¹ Option  Solid stream spray nozzle CCP series

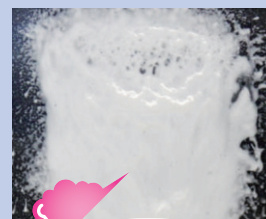
The consistency of the foam is variable by adjusting air pressure and liquid pressure.*²



Low
density foam



Medium
density foam



High
density foam

Example at a compressed air pressure of 0.3 MPa and with detergent dilution rate of 1%.

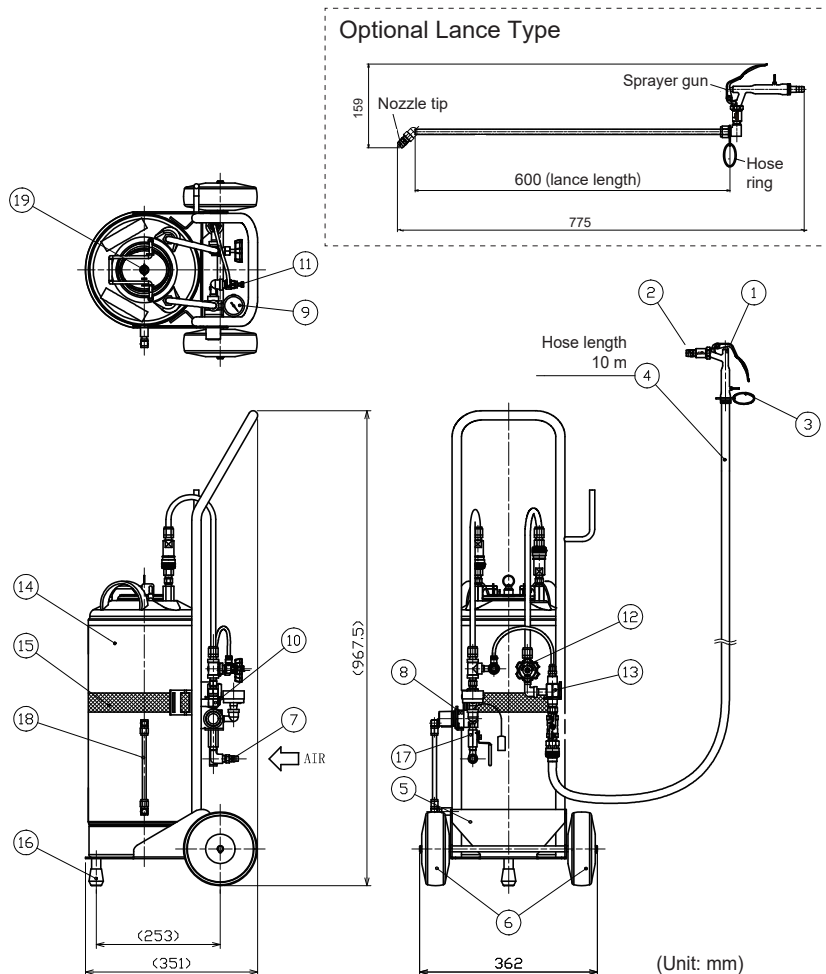
*² Conditions for adjustment will vary depending on factors such as a type of detergent and its concentration.



"The Fog Engineers"

H. IKEUCHI & CO., LTD.

Drawing



Weight: approx. 13 kg (empty tank)

Components	Materials ³
1. Sprayer gun	S316L
2. Nozzle tip	S303
3. Hose ring	S316
4. Hose (10 m)	Polyolefin
5. Base	S304
6. Caster	Urethane, etc.
7. Coupler plug	S304
8. Air regulator	Aluminum alloy, etc.
9. Pressure gauge (1.0 MPa)	Brass, etc.
10. Check valve	S303, EPDM
11. Throttle valve	S304, PP, EPDM
12. Needle valve	S316
13. Mixing adaptor	S304
14. Pressure tank	S304
15. Tank fastening belt	PP
16. Rubber feet	EPDM
17. Ball valve	Plated brass
18. Liquid level gauge	S316, FEP
19. Relief valve (0.59 MPa)	Polyacetal, etc.

³"S" represents "stainless steel". For example, S303 stands for stainless steel 303.

Specifications

Air pressure (MPa)	Throttle valve ^{*4}	Needle valve ^{*4}	Spray capacity ^{*5} (L/min)	Air consumption (L/min, Normal)
0.3	Half turn	Half turn	2.0	17
	1 turn		1.8	24
	4 turns		1.6	57

^{*4} Number of rotations carried out from a fully closed-valve state.

^{*5} Spray liquid is tap water. Actual spray capacity will vary depending on factors such as a type of detergent and its concentration.

Pressure Tank Specifications

Tank capacity	18 liters
Max. operating pressure	0.49 MPa
Relief valve activating pressure	0.59 MPa

How to Order Please inquire or order using these product codes.

AWA Cart-S-A

Standard AWACart

AWA Cart-S-A-L

AWACart with optional lance

The parts which come in contact with the liquids are resistant to strong alkaline solution.

Please feel free to send any inquiry, request for information or quote regarding this product to the contact below.



"The Fog Engineers"
H. IKEUCHI & CO., LTD.

Headquarters

Daiichi Kyogyo Bldg., 1-15-15, Awaza, Nishi-ku, Osaka 550-0011, Japan
Tel: 81-6-6538-4015 Fax: 81-6-6538-4022
E-mail: overseas@kirinoikeuchi.co.jp
URL: <https://www.kirinoikeuchi.co.jp/eng/>

We have branches and affiliate companies around the world—in China, the USA, the Netherlands, Thailand, Indonesia, and more.
Please see our website for the nearest contact.

<https://www.kirinoikeuchi.co.jp/eng/company/location/>